



MAWA 10

Alarm for broken liquid seal

Application

For use with Alfa Laval marine and power mineral oil separators of solids-retaining bowl type.

Working principle

As soon as the water seal is broken or the flow of oil from the separator for any other reason diminishes or stops completely the pressure switch in the clean oil outlet will initiate the alarm via the control cabinet.

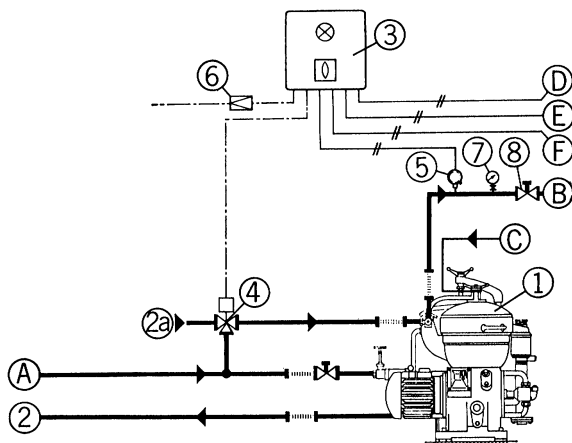
When the alarm sounds, or when control voltage or air supply cease, the 3-way valve in the separator feed pipe changes position. The supply of oil to the separator is thus cut off and the oil from the separator pump is recirculated via the oil heater back to the tank.

Standard design

The equipment is built into a fully welded, splash-proof cabinet which can be mounted on wall or bulkhead. The cabinet has nipples for the operating air tubes (6/4 mm copper tubing) and terminal board for connecting to separate alarm systems of closed or open circuit type and remote lamp indication. Relays are of plug-in type.



The MAWA 10 cabinet.



Flow chart

1. Alfa Laval separator
2. Dirty oil to heater
- 2a. Dirty oil from heater
- 3. Cabinet**
- 4. 3-way valve**
- 5. Pressure switch**
6. Air reducing unit
- 7. Pressure gauge**
- 8. Throttle valve**
- A. Dirty oil inlet
- B. Clean oil outlet
- C. Liquid seal supply
- D. Voltage supply
- E. To separate alarm system
- F. To remote control lamp indication

Items in bold type are standard equipment

Technical data

Voltage 220 V, 50 or 60 Hz. Air pressure 4 bar.

Standard accessories

These include for each separator a pneumatically operated 3-way valve, connection 1" or 1 1/2", a pressure switch and a pressure gauge with cock.

Extra equipment

Air pressure-reducing unit with filter and pressure gauge for connection to a primary pressure of max. 10 bar.

Transformer (if other voltage than 220 V is used) and siren.

Ordering

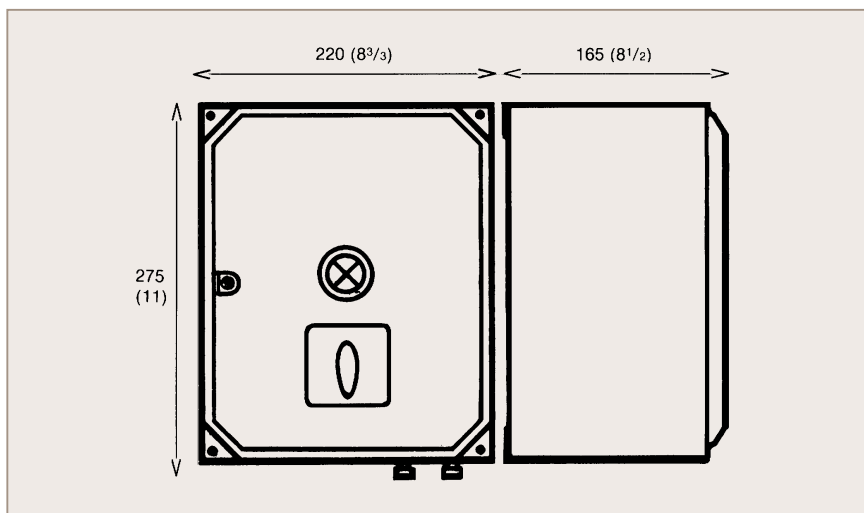
When ordering please state type(s) of separator(s).

Shipping data

Gross weight	
kg	30
lbs	66

Net weight	
kg	25
lbs	25

Volume	
m ³	0,25
cu.ft	8.8

Dimensions

Measurements in mm (in).

259-PD2en-0108

How to contact Alfa Laval

Contact details for all countries are continually updated on our website. Please visit www.alfalaval.com to access the information direct.